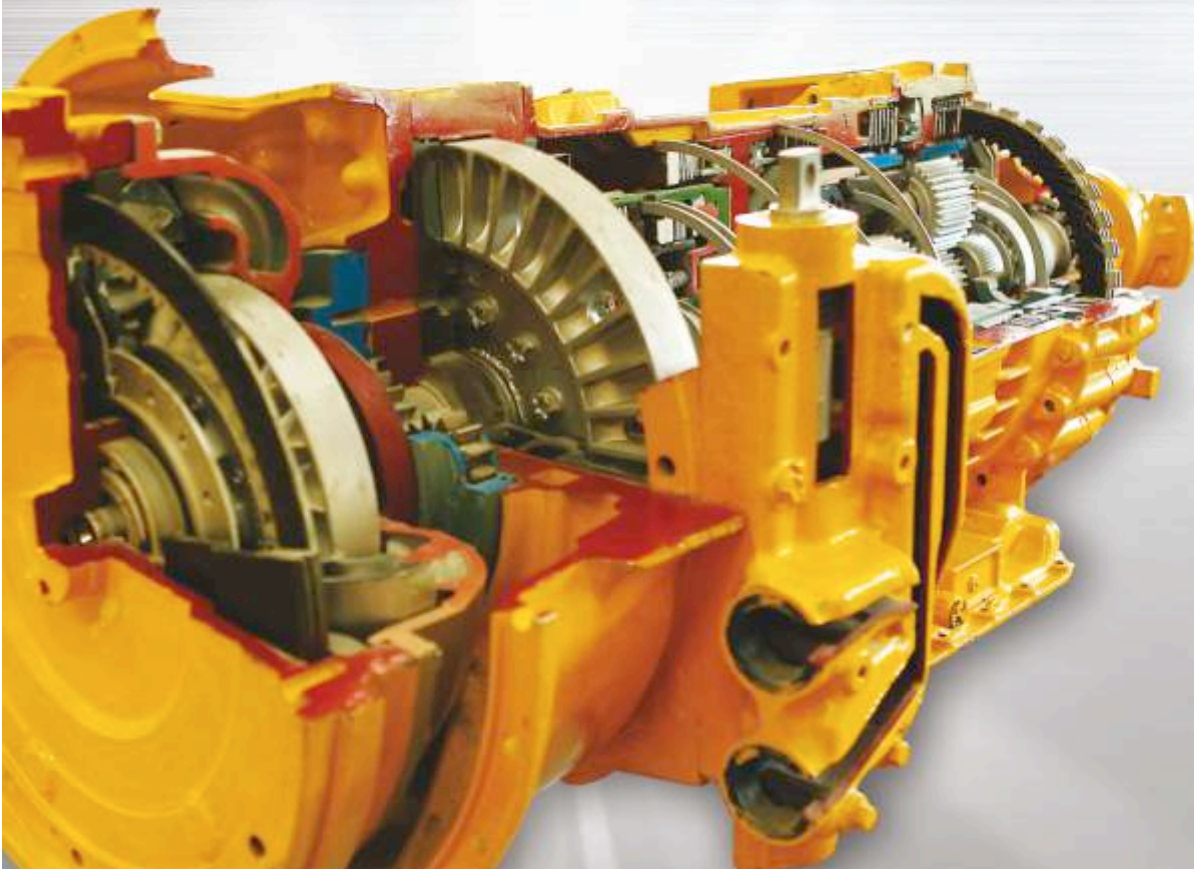


Hauling & Cycling Transmissions for

Construction & Mining equipment | Material handling equipment | Oil-field application | Railway application

'Power To Your **Off-highway** Vehicle'



Off-highway Transmission Experts

AVTEC is one of the leading Supplier of High precision Cycling & Hauling transmission aggregates & components for the off-highway market, serving a broad array of applications in Construction, Mining, Material handling, Oil field & Railways with several marquee Customers including leading OEMs like BEML, Caterpillar, Eaton, Telcon, L&T, Cargotec, Godrej and many more.

The business operates out of its state-of-the-art manufacturing facilities at Hosur & Chennai in Tamil Nadu. The Hosur plant manufactures Transmission aggregates & Components - both Automatic and Power-shift, for cycling & hauling applications. The MEPZ Plant, Chennai is a dedicated Export Oriented Unit, catering to the ever increasing global demand for Transmissions and Precision Engineered Components.

AVTEC's in-house Technical Centre at Hosur, with a capability to Design & Development, prototyping, testing, validation and value added application engineering complemented with the expertise in developing and managing the complete supply chain, has made AVTEC the only Indian player with the ability to supply full Transmission Aggregates to the Off Highway market.

Application Segments

Construction

Wheeled Loader

Mining

C crane
Low profile loader
Dump trucks

Material Handling

Crane carrier
Tractor trailer
Heavy lift crane
Top lift truck / reach stacker
Forklift
Empty container handler
Tyre handler
Air craft tow tractor

Railways

Rail bus / track maintenance vehicle
OHE car / utility vehicle

Oil Field Application

Drilling / well killing / work over rig

HTXL 50 (50 HP)
Powershift Transmission



Application : Forklift



Product Specifications :

Model name	HTXL 50
Type(Cycling/Hauling)	Cycling
Net Input Power	50 HP (37.25KW)
Net Input Torque	147.5 Lb Ft(200 Nm)
Input Speed (Max)	3000 RPM
Speeds	1F /1R
Segment	Material handling

TT/TRT 2000 Series (175 HP) Powershift Transmission



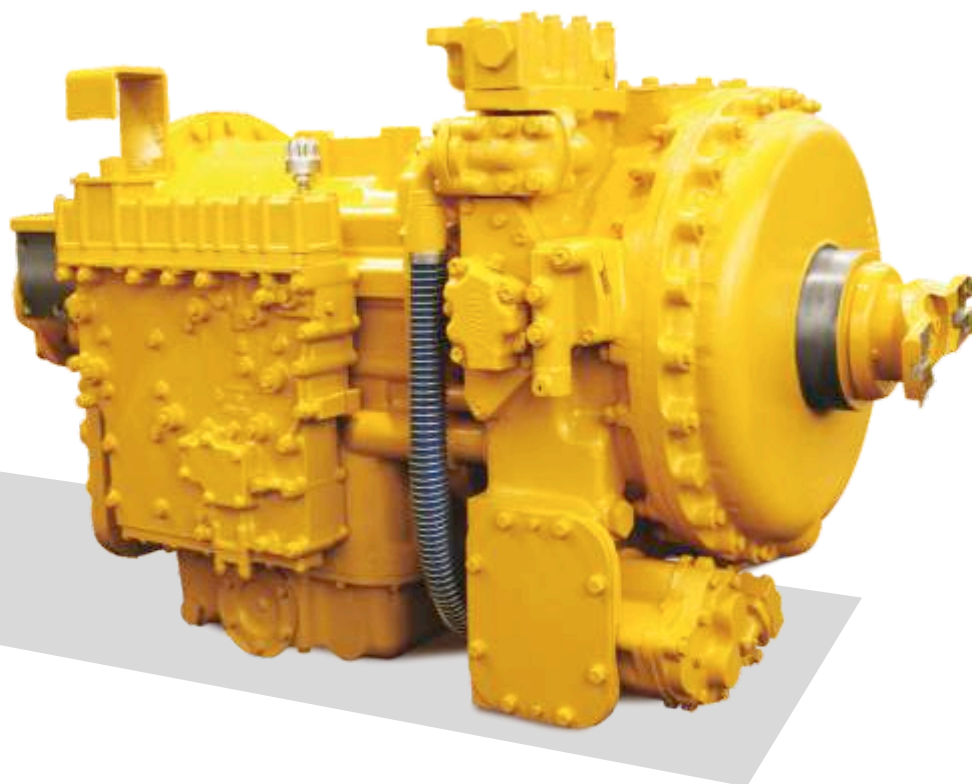
Product Specifications :

Model name	TT/TRT 2000
Type(Cycling/Hauling)	Cycling
Net Input Power	175 HP (130KW)
Net Input Torque	310 Lb Ft (420 Nm)
Input Speed (Max)	3000 RPM
Speeds	2F /1R, 1F/1R or 2F/2R
Segment	Construction Material handling Mining Railway segment

Application : Aircraft Tow Tractor | Wheeled Loader | Rail Bus | Forklift | Track Maintenance Vehicle | Crane



M, S 5/6000 Series (550 - 710 HP) Automatic/Powershift Transmission



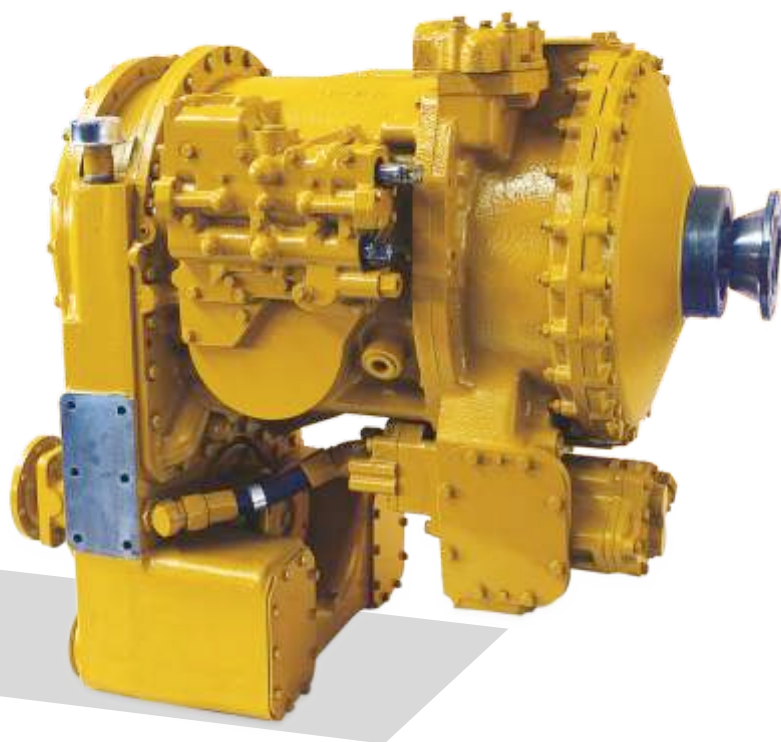
Product Specifications :

Model name	M, S 5/6000
Type(Cycling/Hauling)	Hauling
Net Input Power	550 HP - 710 HP (410KW - 529KW)
Net Input Torque	1750 - 2270 LbFt (2373 - 3078 Nm)
Input Speed (Max)	2500 RPM
Speeds	6F / 1R or 2R
Segment	Mining Oil Field

Application : 60 T/ 40T Rear Dumper | Work over Rig



CRT 5633 (430 HP) Powershift Transmission



Product Specifications :

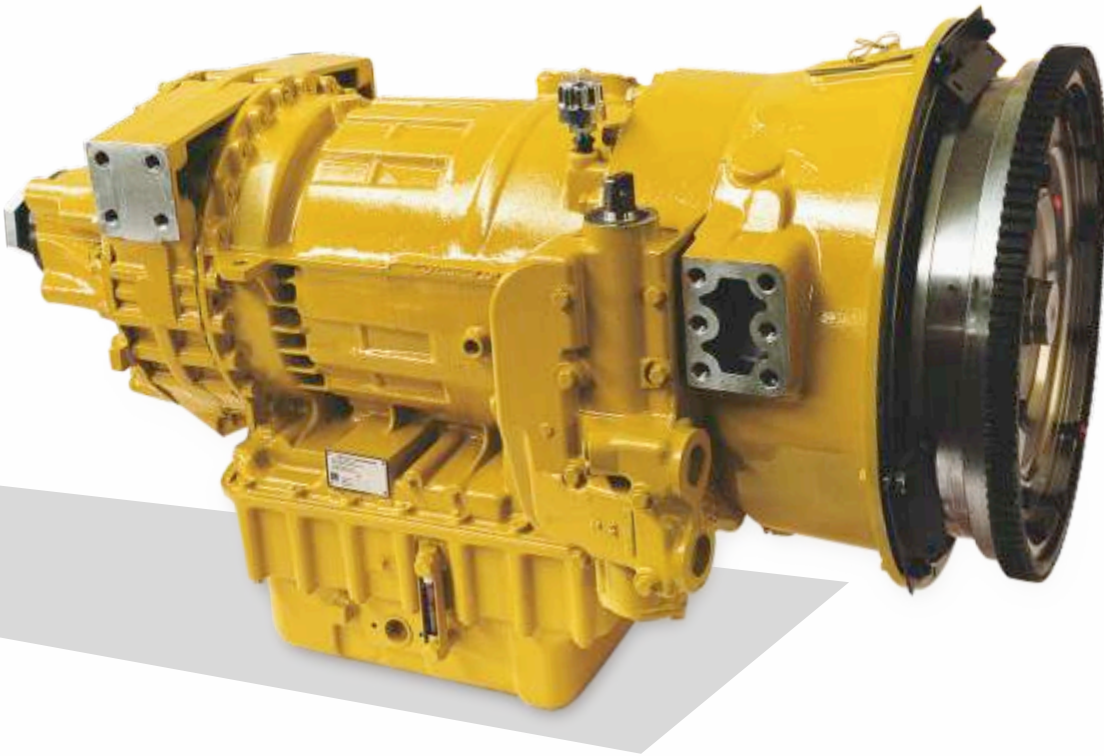
Model name	CRT 5633
Type(Cycling/Hauling)	Cycling
Net Input Power	430 HP (320KW)
Net Input Torque	900 Lb Ft (1220 Nm)
Input Speed (Max)	2500 RPM
Speeds	3F / 3R
Segment	Construction Material handling Railway segment

Application : Shunting Loco | Mobile Bridge Inspection Vehicle | Utility Vehicle | Top Lift Truck | 8 & 4 Wheel OHE Car | Reach Stacker | Wheeled Loader



CL(B)T 754 (445 HP)

Automatic/Powershift Transmission



Product Specifications :

Model name	CL(B)T 754
Type(Cycling/Hauling)	Hauling
Net Input Power	445 HP (332KW)
Net Input Torque	1300 Lb Ft(1764 Nm)
Input Speed (Max)	2500 RPM
Speeds	5F /1R
Segment	Mining
	Oil Field

Application : Rear Dumper | Cementing Unit | Water Sprinkler | Work Over Rig | Mud Pump



CT 100 (100 HP) Powershift Transmission



Product Specifications :

Model name	CT 100
Type(Cycling/Hauling)	Cycling
Net Input Power	100 HP (74.5 KW)
Net Input Torque	221 Lb Ft (300 Nm)
Input Speed (Max)	2500 RPM
Speeds	2F /2R or 3F/3R
Segment	Material handling

Application : Forklift | Aircraft Tow Tractor



About AVTEC

AVTEC is one of the largest independent manufacturer of powertrain and precision-engineered products in India. It is a part of CK Birla Group – a leading global business house, with over 20,000 employees and a combined turnover of USD 1.6 billion.

Spearheading technological innovations since its inception, AVTEC has earned a formidable reputation in domestic and international markets for manufacturing products such as Engines, Transmissions and high precision components like cylinder head, cylinder block, cam shaft, crank shaft, con rod and transmission gears and shafts for the Automotive, Off-highway, Agriculture and Railway Industries.

AVTEC's state-of-the-art manufacturing units at Pithampur, Hosur & Chennai, are equipped with the best of international machines and systems. Its in-house tech centre and design and development facility and capability to handle the entire supply chain management, including Global R&D and manufacturing footprints in Europe and warehouses in USA, enable it to provide the complete powertrain solution from art to part to an array of global customers.

Having already won the trust of leading global and domestic OEM's, With AVTEC, you are sure of nothing but the best.



Automotive Engines & Transmissions | Off-highway Transmissions | Components | Innovative Drive Solutions

AVTEC

 | Powertrain & Precision
Engineered Products

AVTEC Limited (CK Birla Group) Poonapalli Village, Mathagondapalli Post, Hosur-635 114. Tamil Nadu, India.

Tel: +91 (4344) 405208/289/352/354 (Marketing), 405270/268 (Parts and Sales Admin), 405242 (Service) • Email: marketing.ppd@avtec.in • Website: www.avtec.in